

Installation of IBM SPSS Statistics 22

- Go to: <https://tjinfo.uib.no/program>
- Log on

Du er kommet frem til UiBs side for nedlasting av lisensiert programvare. Du må oppgi ditt brukernavn og passord på UiB for å få tilgang til dem.

This is the page where you can download site licensed programs at the University of Bergen. You have to give your UiB username and password to get access.

Oppgi brukernavn: *Your username*

Oppgi passordet: *Your password*

[Prøv singel signon med kerberos](#)

Ved problem med bruk av lisensiert programvare, kan du [registrere en sak for BRITA](#)

- Chose SPSS

- [Petrel](#)
- [RMS](#)
- [Reference Manager](#)
- [SPSS](#)
- [SPSS_Amos](#)
- [SPSS_Data Access pack](#)
- [SPSS_DataCollectionDataEntry](#)

- chose "SPSS_Statistics_22_win64_.zip" (or the newest version)
Old computer with 32-bit processor might need "SPSS_Statistics_22_win32_.zip". [Her you see how to check what kind of computer you have.](#)
- Click "send"

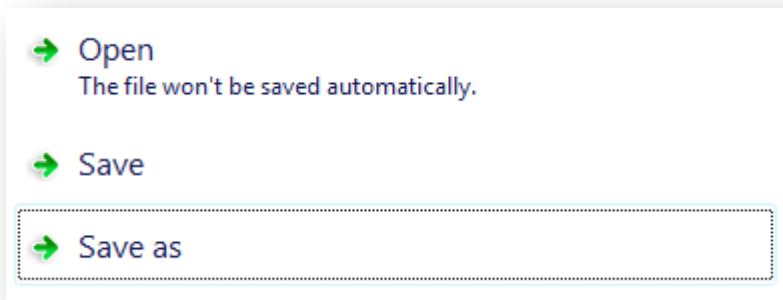
- SPSS_Statistics_22_win32_.zip (782.789 megabytes)
- SPSS_Statistics_22_win64_.zip (811.714 megabytes)
- [All nedlastbar programvare](#)

[\[Tilbake\]](#)

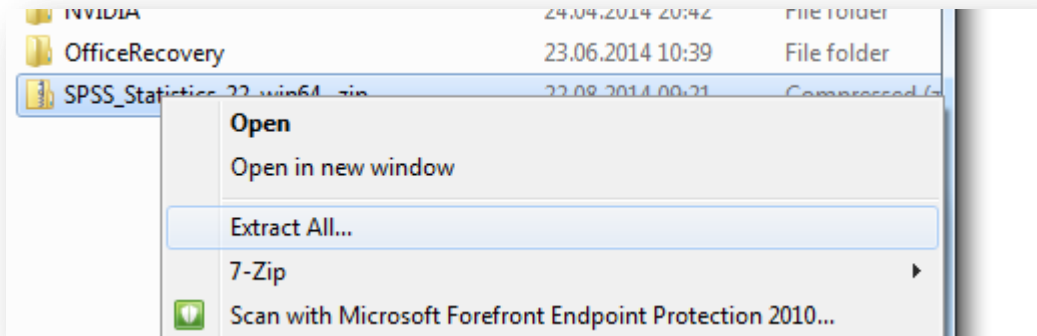
Logout

Ved problem med bruk av lisensiert programvare, kan du [registrere en sak for BRITA](#)

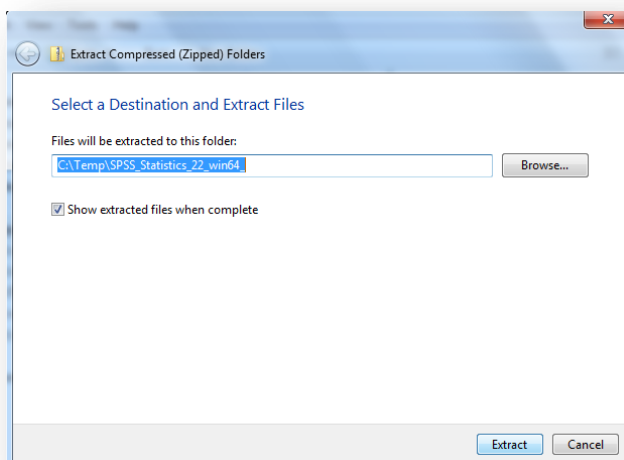
- Click save as



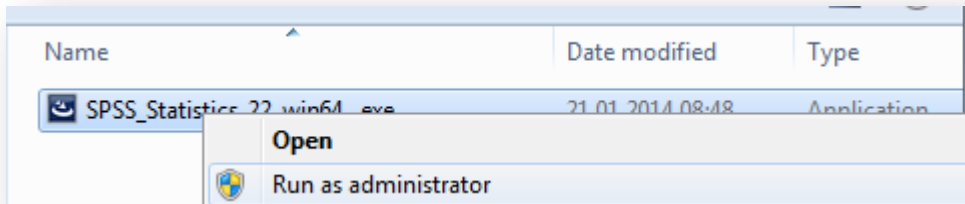
- When the file is saved you have to right click the file and extract it (because the file is zipped)



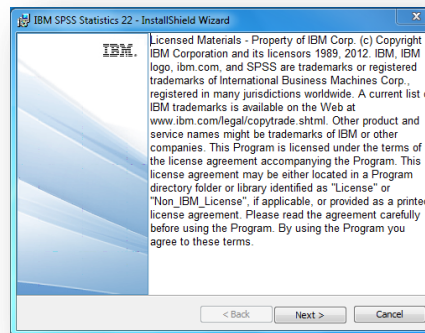
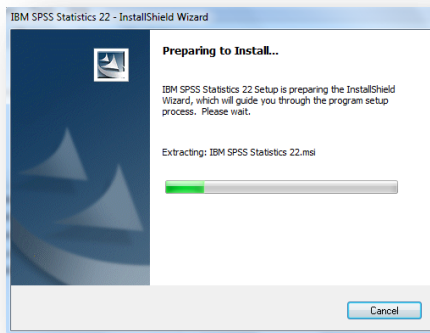
- Chose where to extract the files



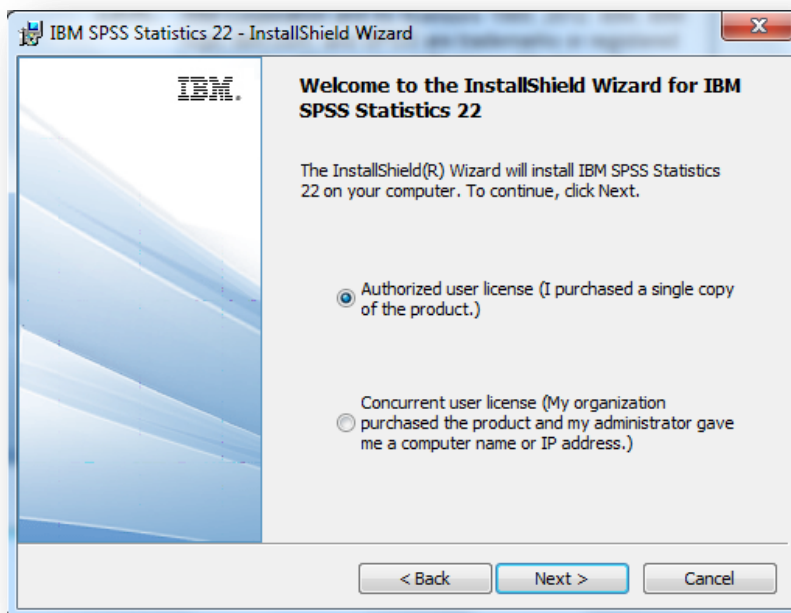
- Right click the installation file and chose "Run as administrator"



--Click "Next"



- Chose "Authorized user license (I purchased a single copy of the product)"



- Click "Next"

- Click "Next"

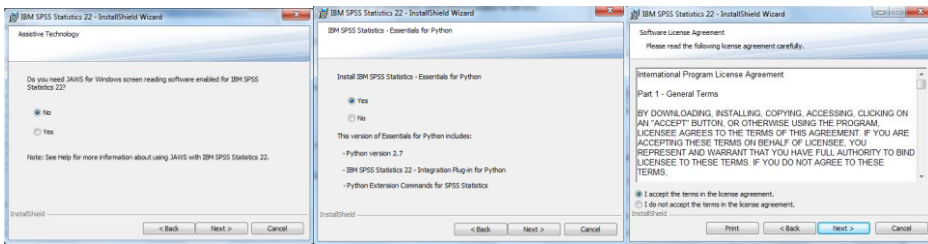
- Click "Next"



- Click "Next"

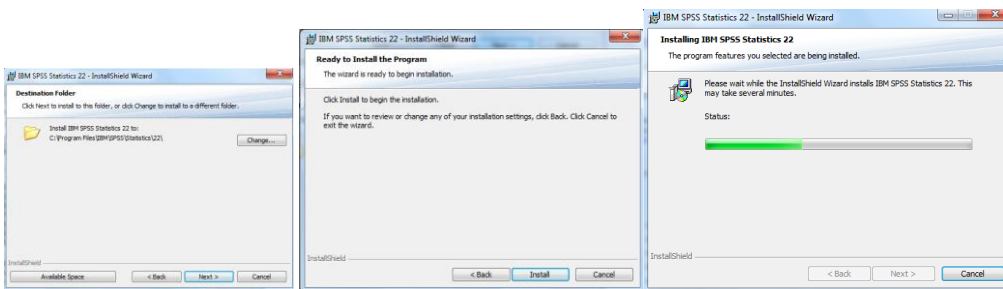
- Click "Next"

- Accept and Click "Next"

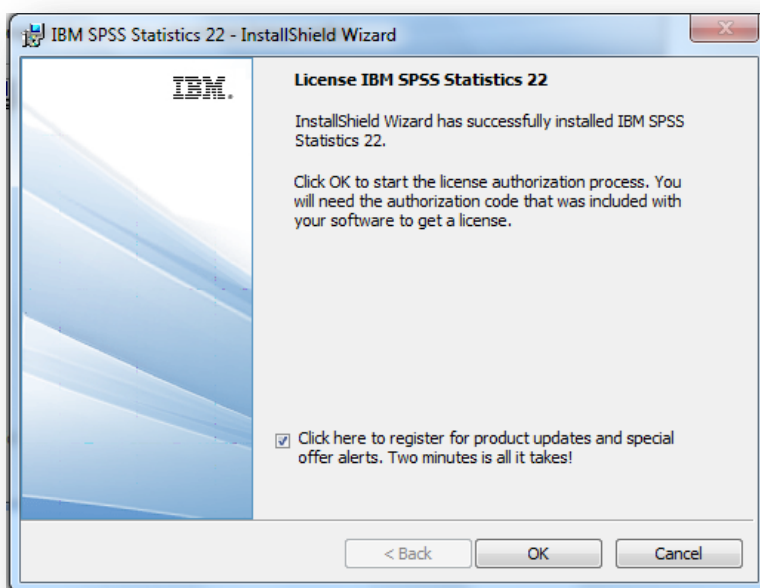


- Click "Next"

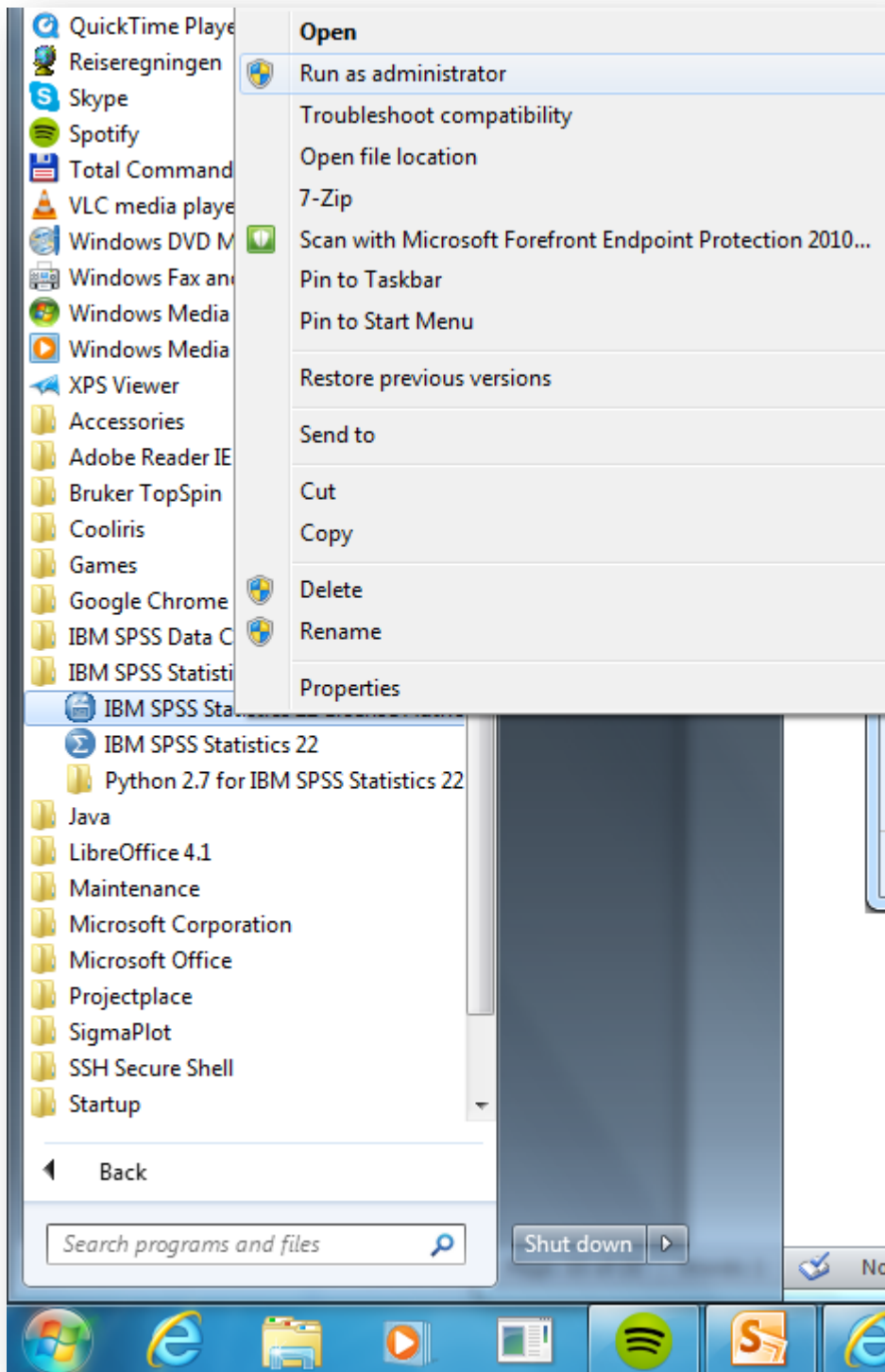
- Click "Install"



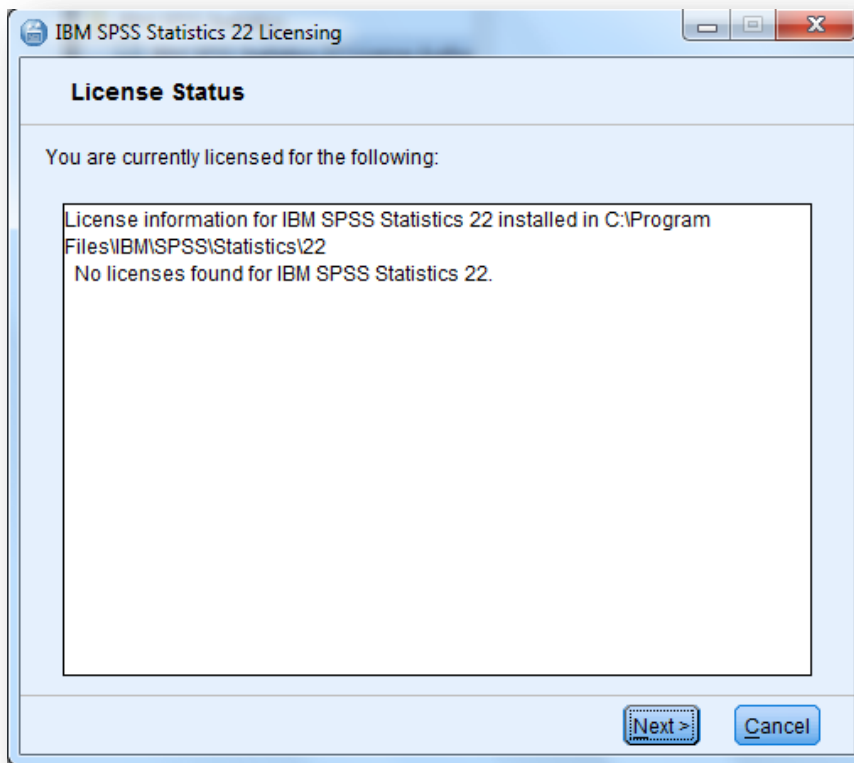
- Chose whether you want to register and click "OK"



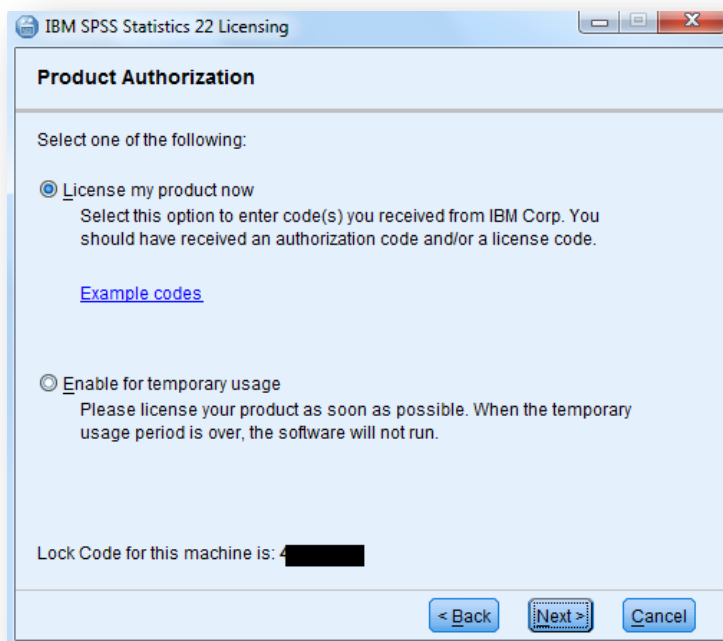
- If “**IBM SPSS Statistics license authorization wizard**” doesn’t start automatically you can start it manually (right click – run as administrator)
(Start – all Programs – IBM SPSS Statistics)



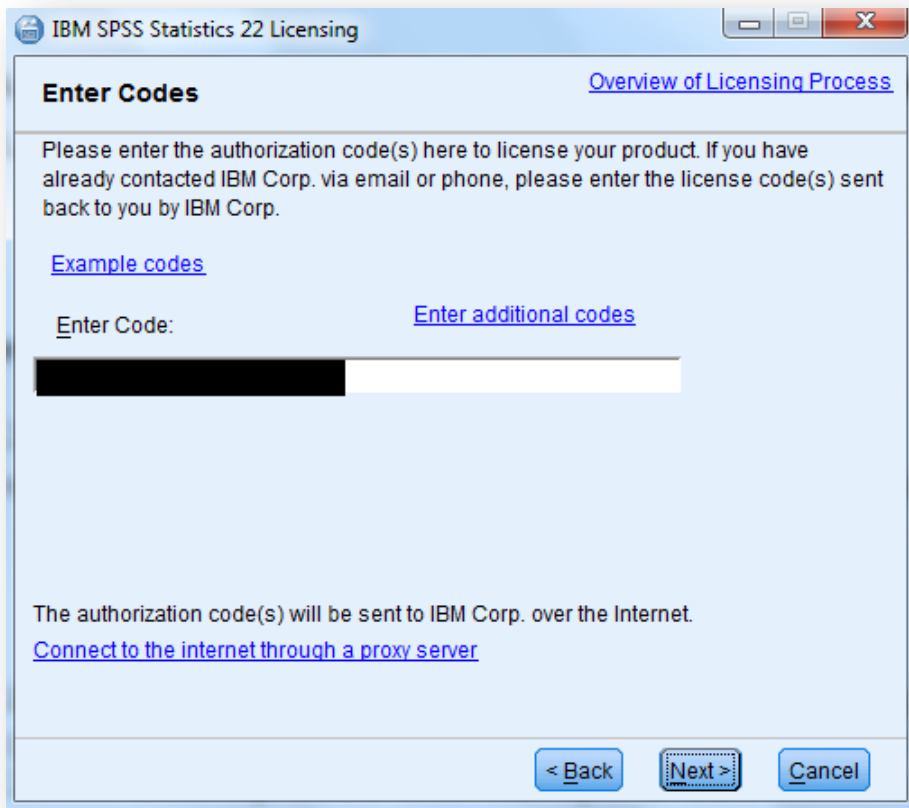
- Click "Next" (if this box occur)



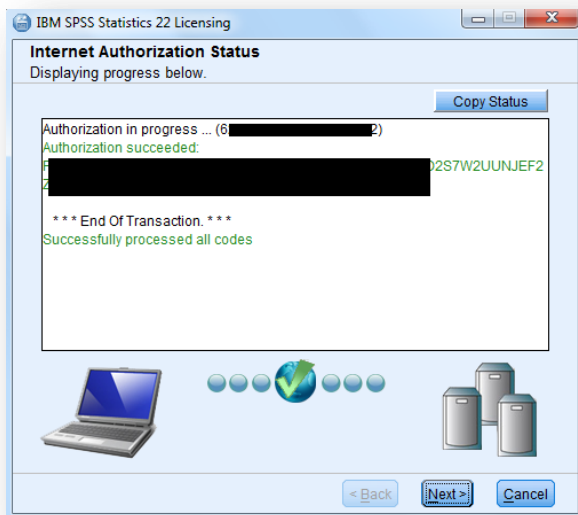
- Chose "License my product now"



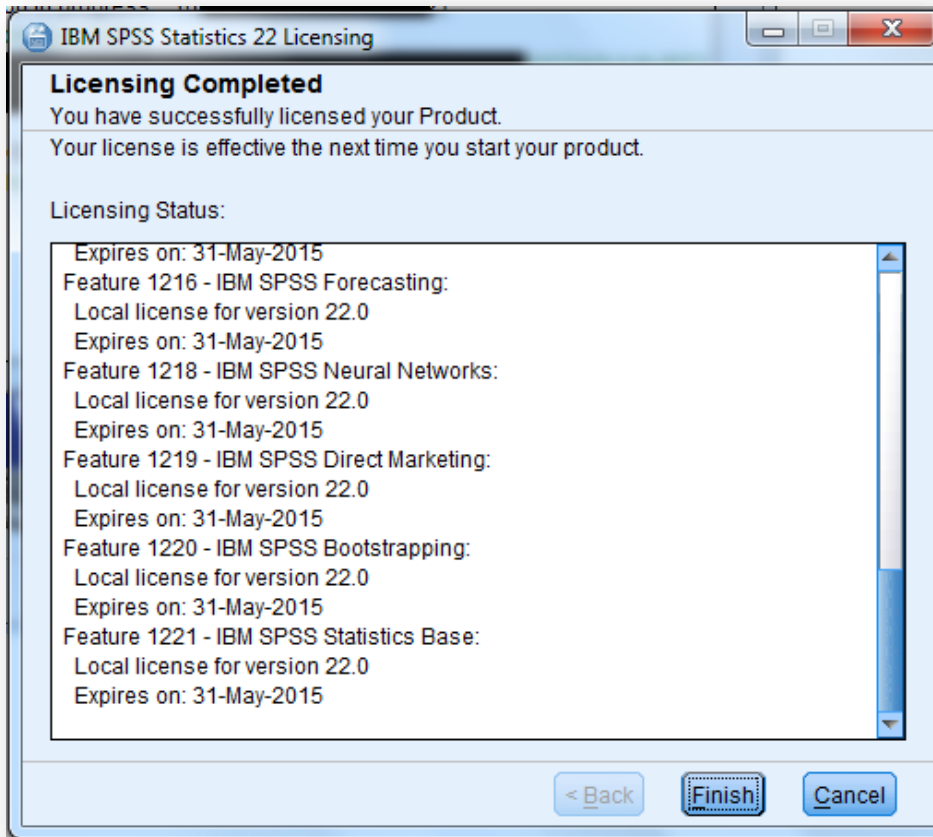
- Enter the right code (from <https://tjinfo.uib.no/program/InstallasjonskoderSPSS.pdf>)
- Click "Next"



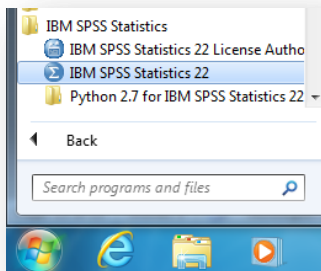
- Click "Next"



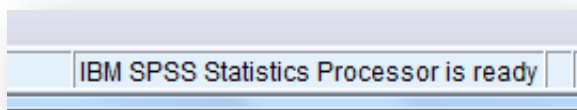
- "Finnish"



- Run SPSS



- Check that "IBM SPSS Statistics Processor is ready"



Good luck 😊